



Montcalm County

Montcalm County Great Start Collaborative

Agenda

2/1/23

11:30am - 1:30pm

Meeting in Person at MAISD 621 New St Stanton

- I. Call to order:
- II. Welcome & Introductions:
- III. Public Comment:
- IV. February Agenda Approval:
- V. December Meeting Minutes Approval:
- VI. Director Report: Cari O'Connor
- VII. New Business:
 - A. Highlight Presentation: Alpha Family Services- Karen Marsman
 - B. [MI Math Vision](#) & [Survey](#)
- VIII. Old Business:
 - A. Dolly Parton Imagination Library update
 - B. Early On Local Interagency Coordinating Council (LICC): Cindy DeYoung
 - C. Talking is Teaching Update: Monique Cooper
- IX. Committee Reports:
 - A. Executive & Communication: Jessica Higley
 - B. Early Care & Education: Mindy Train
 - C. Family Wellness: Karen Marsman
 - D. Parent Leadership & Talking is Teaching: Monique Cooper
- X. Roundtable Updates
- XI. Principals of Collaboration Survey
- XII. Adjournment

Next Meeting Date: April 5th, 11:30 am – 1:30 pm Location 621 New St Stanton MI 48888

**Please see our website for the most updated calendar information at www.GreatStartMontcalm.org.

*Advance health equities.
Early Childhood services meet high standards of quality.
Children prenatal to age five and their families thrive.*



Montcalm County

Montcalm County Great Start Collaborative

Minutes

12/7/22

11:30am - 1:30pm

Meeting in Person at MAISD 621 New St Stanton

I. Call to order:

Higley called the meeting to order at 11:35 am

II. Welcome & Introductions:

Present: Alisha Bartlett, Abbey Blondin, Elizabeth Buskirk, Renae Caudill, Monique Cooper, Cindy DeYoung, Wendy Fillmore, Samantha Ford, Jessica Higley, Tayler Hoover, Liz Ingraham, Sue Kearney, Dena Kent, Lillie McNeil, Cari O'Connor, Jennifer Peterman, Nancy Secor, Roger Thelen, Drew Train, Mindy Train, Joanna Urban, Leah Groves, Emily Dowd

III. Public Comment:

None

IV. December Agenda Approval:

Motioned was made by Renae Caudill and supported by Lillie McNeil, to approve the agenda for the December meeting as presented, motion carried.

V. October Meeting Minutes Approval:

Motioned was made by Renae Caudill and supported by Dena Kent, to approve the minutes from the October, meeting as presented, motion carried.

VI. Director Report: Cari O'Connor

2022-2023 Preschool application: 2022-23 application is live online. If you have not put the application on your social media or shared on Facebook (link or web address) please do so to encourage preschool participation! Preschool Matters campaign has been going on since Late Aug. Includes billboards, radio, social media, and Daily Newsprint and social media campaign. As of 11/4/22 we have enrolled 355 children. Some programs are full, while others have openings. We were approved for the Over Income waiver. We have capacity to serve another 15 children with our current accepted slots; especially in the Greenville area.

Newsletter & Social Media messaging opportunities: One resource you can share with families is the MCGSC newsletter. Please connect with Mindy today if you are interested in signing up or getting information on how to support families to sign up for the newsletter!

MCGSC: Playgroup activities are happening! Please spread the word! In person options all over the county! All families with children under 5 are welcome to participate. Literacy support is continuing as we are incorporating Talking is Teaching elements for books along with Play Learn & Read Resources! Locations for playgroup this year are Greenville, Montabella, Tri County, Sidney!

Parent Coalition is meeting monthly! Please help us in spreading the word and connecting with parents by putting this information on your Facebooks & social media!

Montcalm County Great Start website: Please share in your own messaging arenas. GreatStartMontcalm.org

32P Reporting: We have submitted our Fiscal Expenditure Report information, our 2022-2023 Budget (\$268 cut) & our 32P Work Plan for approval. We are still waiting on our call reviews and approvals as the primary staff at MDE has left. There has not been a replacement identified to date.

Advance health equities.

Early Childhood services meet high standards of quality.

Children prenatal to age five and their families thrive.

EMTF and EMTF State Leadership: School wide / Center wide Literacy & Math Essentials See <https://mathessentials.org/> as a Math resource in your district. For Math training opportunities around Math Essentials work across the State. <https://mathessentials.org/math-essentials/up--coming-events/>

Early Childhood Capitol Day March 15th, 2023, Lansing!

SOM Preschool Collaborative: Key priority is universal preschool working in conjunction with Head Start to provide as many options as possible for ALL student 3 & 4! We continue to meet to discuss how to make this opportunity available for all MI 4-year-olds.

MCGSC Staff want to thank all of our board members for the support and contributions made in 2022!

VII. New Business:

A. Highlight Presentation: Michigan Alliance for Families- Leah Groves
Presentation attached

B. Relief After Violent Encounter (RAVE)- Abby Blondin
Programs and service brochure attached

C. Talking is Teaching- Trusted Advisor Training- Monique Cooper
Presentation attached

D. 32P Workplan Approval*- Cari O'Connor
Motioned was made by Roger Thelen and supported by Nancy Secor, to approve the 32P Workplan as presented, motion carried.

VIII. Old Business:

A. Dolly Parton Imagination Library update

2022 Facts

Cost for 2022- \$25,909

Number books mailed- 12,415

235 children have graduated

Donations received through the MAISD to support DPIL \$13,497

Currently 1,133 children enrolled

B. Early On Local Interagency Coordinating Council (LICCC): Cindy DeYoung
Report attached

C. Talking is Teaching Update: Monique Cooper
Created a Let's Talk About Montcalm County (poster attached) able to make poster to fit your organization, just let Monique know if you are interested

IX. Committee Reports:

A. Executive & Communication: Jessica Higley

Did not meet in November, next meeting is March 2023

B. Early Care & Education: Mindy Train

Working with Great Start to Quality to host a couple brown bag lunch and learn sessions

C. Family Wellness: Karen Marsman

Currently planning Tooth Fairy event in February.

D. Parent Leadership & Talking is Teaching: Monique Cooper

Parent Coalition meeting on Monday, Holiday event, pictures with Santa and craft and games from various organizations.

X. Roundtable Updates

- Sue- We Care for Kids Council is currently doing Protect Yourself classes with 3rd graders, should be wrapped up this month and will teach 1st graders starting in January and wrap up in May, also reviewing the curriculum and possibly switching to something different, something that shows concrete data. Received money from 100 women who care event and using that money towards: WIC client bags, MIHP infant/child CPR classes, curriculum update, promotional items, possibly early childhood conference sponsoring a speaker. Family Fun Day, May 6th at MACC
- Dena- MMDHD is offering flu/COVID vaccine and booster by appointment. WIC will be at Alpha Family Services every Thursday, but the first Thursday of the month

Advance health equities.

Early Childhood services meet high standards of quality.

Children prenatal to age five and their families thrive.

- Jennifer- Welcome baby has a dietitian now on staff, car seat program available for \$25.
- Samantha- (United Way)- the season of caring program wraps up next week. 700 bags going home with IM Kids 3rd meal 37 items in the bags. 250 senior bags. 250 hygiene bags. Received 2 large grants for diapers, will be doing pop up shops be delivering 6000 diapers in December. Website is going through a overhaul, from a grant received from community foundation. Still have some funds to help support translating materials into Spanish. Completed with college, diversity, and equality training, trained 237people
- Joanna- MSUE is wrapping up show me nutrition classes in four GSRP classrooms.
- Lillie- WRRRC is in the middle of a brand change. Working on more virtual trainings in the new year but more targeted in person trainings as well. New and expanding childcare grants available.
- Abby- RAVE, has a Christmas wish list, check Facebook for list
- Jessica- DHHS looking for foster parents and creative ways to support foster families and youth in care
- Wendy- Greenbriar apartments is working on educational components with activities. Special guest speaker coming to talk about stress management

XI. Principals of Collaboration Survey

Questions/Feedback for Michigan Alliance for Families

- Good information
- Seen this presentation before, but really liked the information that was shared today
- Do you help with kids in college
- Learned lots

Questions/Feedback for RAVE

- Thank you for all that you do
- Great information
- Learned lots and appreciate the update on services offered

Questions/Feedback for Talking is Teaching

- Good job, Monique
- Would like all the posters that are Montcalm specific

Highlight Presentation Ideas

- Personal body safety tips for children/parents
- GSQ brand transition (possibly sharing in April)
- We Care for Kids
- Montcalm Care Network- Liz
- Welcome Baby
- More speakers on special education

Other Comments

- Lunch was awesome
- Happy Holiday's

Lunch Option Vote for Upcoming Meetings

- Taco Bar- 4 votes
- Pizza- 2 votes
- Subs- 8 votes
- Other
 - Fresh veggies and dip

XII. Adjournment

adjourn at 1:30 pm

Next Meeting Date: December 7th, 11:30 am – 1:30 pm Location 621 New St Stanton MI 48888

**Please see our website for the most updated calendar information at www.GreatStartMontcalm.org.

Advance health equities.

Early Childhood services meet high standards of quality.

Children prenatal to age five and their families thrive.



Don't forget to REFER today for any infant or toddler you have concerns about! ANYONE can refer.

Go to: www.1800Earlyon.org or call 1-800-EarlyOn

MAISD Early On LICC Report: February 1, 2023

Comparison Referral Data

	2017-18 Referrals	2018-19 Referrals	2019-20 Referrals	2020-21 Referrals	2021-22 Referrals	2022-2023 Referrals
July	16	30	35	20	28	9
August	27	40	33	16	26	38
September	24	13	25	24	30	27
October	17	24	19	32	24	19
November	12	17	12	11	34	33
December	8	17	21	18	14	20
January	15	22	35	30	32	22*
February	29	35	34	23	28	
March	26	26	25	25	38	
April	31	34	14	31	26	
May	17	32	10	22	24	
June	24	25	16	24	33	
TOTAL	229	315	279	266	337	

*as of January 24, 2023

As of January 24, 2023 Montcalm Area ISD Early On has:

- 26 Children in Referral
- 141 Children enrolled and receiving Early On Services.
- 21 of 141 students receiving Early On are ALSO receiving special education services (Michigan Mandated Special Education MMSE).

Professional Learning

ARP funds were used to present Cari Ebert Professional Learning for Early On Staff, GSRP teachers and association teachers and related service providers across MAISD. Topics were:

“The Power of Play in High Tech World”

&

“Using Connection and Compassion to Address Challenging Behavior in Young Children”

We received great feedback. Some comments included:

- Great reminders to keep open mind a positive intent when considering children’s challenging behaviors
- Great Information!
- Interested in having her come back with more information on Autism and Sensory processing

We look forward to April when we have Melanie Potock coming to an all day training with Early On staff regarding picky eating and nutrition.

General Supervision Monitoring

We did an internal audit of 10% of our cases to monitor for compliance and quality IFSP writing. Findings were positive with a few details to improve upon.

Social Media:

Elizabeth Buskrik has been creating amazing visuals for our Facebook Page.



RESOURCES:

Check us out on Social Media



Montcalm Co. Playgroup

Private group



MAISD Early On

- Need more developmental wheels, Early On Pamphlets or other Materials? Email Elizabeth Buskirk at ebuskirk@maisd.com
- Interested in having an Early On Staff Member come speak to your organization? Email Cindy DeYoung at cdeyoung@maisd.com



~COME PLAY WITH US~
FREE Playgroup Opportunity in Montcalm County
for Parents & Children!



Any family with children from ages birth thru 4 years old living in Montcalm Area Intermediate School District is welcome to attend.

Registration is preferred prior to attending. Call (616) 225-6146 to register or for more information.

Highlights

- *Try new activities with your child that will stimulate your child's development!
- *Learn songs and read books (receive a copy of each book to keep)
- *Interact with other parents and children!
- *Learn strategies to use at home and have access to Early Childhood professionals to ask questions.

Book of the Month			
<p>September- Llama Llama Red Pajama October- There's a Monster in Your Book November- Pete the Cat's Big Lunch December-If You Give a Mouse a Cookie</p>	<p>January-Little Critter Just a Snowman February- Wild Feelings March- Clifford the Big Red Dog April- Ten Pigs Epic Bath May- There Was an Old Lady Who Swallowed the ABCs</p>		
<p align="center">Tri County Middle School 21350 Kendaville Rd Howard City, MI 49329 Tuesday Morning 9:30am – 11:00am</p> <p>September - 20th, 27th October – 11th, 18th, 25th November – 1st, 8th, 29th December – 6th, 13th January – 10th, 17th, 24th, 31st February – 14th, 21st, 28th March – 7th, 14th, 21st April – 18th, 25th May – 2nd, 9th</p>	<p align="center">Montabella Elementary 1456 North County Line Rd Blanchard, MI 49310 Wednesday Morning 9:30am – 11:00am</p> <p>September - 21st, 28th October – 12th, 19th, 26th November – 2nd, 9th, 30th December – 7th, 14th January – 11th, 18th, 25th February – 1st, 15th, 22nd March – 1st, 8th, 15th, 22nd April – 19th, 26th May – 3rd, 10th</p>		
<p align="center">Montcalm Area Career Center 1550 W Sidney Rd Sidney, MI 48885 Wednesday Morning 9:30am – 11:00am</p> <p>September - 21st, 28th October – 12th, 19th, 26th November – 2nd, 9th, 30th December – 7th January – 11th, 18th, 25th February – 1st, 15th, 22nd March – 1st, 8th, 15th, 22nd April – 19th, 26th May – 3rd, 10th</p>	<p align="center">Mt Calvary Church 908 W Oak St Greenville, MI 48838 Thursday Morning 9:30am – 11:00am</p> <p>September – 22nd, 29th October – 13th, 20th, 27th November – 3rd, 10th December – 8th, 15th January – 12th, 19th, 26th February – 2nd, 16th, 23rd March – 2nd, 9th, 16th, 23rd April – 20th, 27th May – 4th, 11th</p>		
<p>Evening Playgroup at Mt. Calvary Church 908 W Oak St Greenville, MI 48838 5:30pm-6:30pm</p>	<p>September 22 October 27 November 10</p>	<p>December 8 January 19 February 23</p>	<p>March 16 April 20 May 11</p>

SNOWY DAY STORIES EVENT

Join us at the library for story time and crafts
while we enjoy hot chocolate and eat cookies!

FRIDAY, FEBRUARY 3, 2023
10 AM - 11 AM
FLAT RIVER COMMUNITY LIBRARY

Interested in attending sign up at:
Flat River Community Library: 616-754-6359
or
Call: 616-225-6146 or email: mtrain@maisd.com



Flat River
Community
Library



Please join us for our annual FREE event

Tooth Fairy Event

FREE hot cocoa, donuts, books, crafts, games, story time, face painting, and dental supplies for children. Please dress warm, the event is partially outside.

When: Saturday, February 11

Time: 1pm - 3pm

Where: Frugthaven Farms

11466 W Carson City Road

Greenville, MI 48838



montcalm
care network



Montcalm County
www.GreatStartMontcalm.org

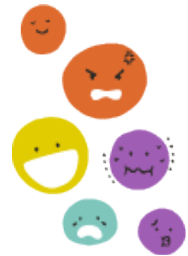
LET'S LISTEN!



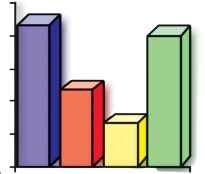
HOW MANY NORMS OF COLLABORATION ARE THERE?



LET'S TALK ABOUT



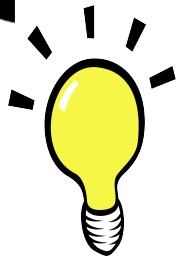
THE NORMS OF COLLABORATION



LET'S COMMUNICATE!



WHICH NORM DO YOU FEEL IS MOST VALUABLE?





NORMS OF COLLABORATION



1. PAUSING

Pausing before responding or asking a question allows time for thinking and enhances dialogue, discussion, and decision-making.

2. PARAPHRASING

Using a paraphrase starter that is comfortable for you - “So...” or “As you are...” - and following the starter with an efficient paraphrase assists members of the group in hearing and understanding one another as they converse and make decisions.

3. POSING QUESTIONS

Two intentions of posing questions are to explore and to specify thinking. Questions may be posed to explore perceptions, assumptions, and interpretations, and to invite others to inquire into their thinking.

4. PUTTING IDEAS ON THE TABLE

Ideas are the heart of meaningful dialogue and discussion. Label the intention of your comments.

5. PROVIDING DATA

Providing data, both qualitative and quantitative, in a variety of forms supports group members in constructing shared understanding from their work. Data have no meaning beyond that which we make of them; shared meaning develops from collaboratively exploring, analyzing, and interpreting data.

6. PAYING ATTENTION TO SELF AND OTHERS

Meaningful dialogue and discussion are facilitated when each group member is conscious of self and of others, and is aware of what (s)he is saying and how it is said as well as how others are responding. This includes paying attention to learning styles when planning, facilitating, and participating in group meetings and conversations.

7. PRESUMING POSITIVE INTENTIONS

Assuming that others' intentions are positive promotes and facilitates meaningful dialogue and discussion, and prevents unintentional put-downs. Using positive intentions in speech is one manifestation of this norm.



Policy Priorities: 2023-2025

Early Childhood Funding & Coordination

- **Funding Structure**: Create a dedicated fund for the early childhood system, maximize existing funding sources, use the true cost of services to inform future investments and invest in coordination of services and systems.
- **Local Infrastructure**: Increase funding for the Great Start Collaboratives and Great Start Parent Coalitions to support coordination of local early childhood infrastructure and services.

Child Care

- **Maximize Investments**: Sustain and expand the historic federal investment in child care:
 - Maintain family eligibility for subsidy at 200% of the federal poverty level and fund an information campaign to reach and enroll all eligible families;
 - Ensure providers are prospectively reimbursed based on the true cost of care analysis and based on eligible child enrollment rather than attendance; and,
 - Provide funding to support implementation of an infant-toddler contract model.
 - Automatic eligibility of ECE providers for the Child Development and Care subsidy program.
 - Increase funding to intermediaries, including Child Care Resource & Referral, Early Childhood Support Networks, and other institutions of trust for child care providers.
- **Provide Support through Social Emotional Consultation**: Expand funding for Infant and Early Childhood Mental Health Consultation for early educators and families.

Home Visiting

- **Equity**: Make home visiting available and accessible to all families who want to enroll with outreach efforts that share all options and honor family choice and voice.
- **Maintain & Expand**: Seek inflationary increases for current programs to retain and attract workforce and support expansions where there is unmet demand.
- **Maximize with Flexibility**: Ensure every available dollar for home visiting including state and federal resources is utilized while adequately investing in necessary system supports such as professional development across all models and programs.

Cross-Sector Workforce Strategies

- **Provide Adequate Compensation**: Establish and implement cross-sector wage scales that are aligned with the compensation research done by Prenatal-to-Five Fiscal Strategies at the state-level and in Detroit.
- **Strengthen Pathways, Professional Development & Collaboration**: In collaboration and alignment with intermediate school districts (ISDs) and higher education institutions, create a

cross-sector career lattice to improve professional development, pathways, and other supports, while ensuring it is designed with adequate support and resources to move through and across.

- Improve Public Perception: Conduct a public awareness campaign to lift the value of the early childhood workforce and to support recruitment efforts.
- Implement Implicit Bias Training: Build on the state government efforts that require implicit bias training for licensed health care workers through implementation of this requirement for those licensed in the early childhood workforce.

Medicaid

- Extend Continuous Eligibility: Implement multi-year continuous eligibility for children enrolled in Medicaid through age 6 and consider broadening this policy to include other public health insurance programs that Michigan residents access.
- Five Year waiting period: Remove the waiting period for pregnant people and children who are lawfully residing (“green card” holders), through the Immigrant Children’s Health Improvement Act option.
- Responsive models of care: Support Medicaid reimbursement for the full continuum of perinatal care to address social determinants of health including doulas, birthing centers, group-based prenatal care, care received at birthing centers, and lactation support.

Early Intervention

- Expand: Continue to expand state investment in *Early On* to fund at the true cost of delivering services, and adequately invest in system supports by expanding MDE’s capacity to support ISDs.

Family Supports

- Remove Barriers to Access: Eliminate requirement that families initiate child support cases against a non-custodial parent to be eligible for child care subsidy and food assistance.

Prevention of Child Welfare

- Support: Expand and fund additional Baby Courts, a specialized treatment court designed to help children under 3 who are being served by child welfare.

Support universal screenings and referrals

- Timely Developmental Screenings: Ensure that children have a developmental screening at 9, 18 and 30 months of age, as recommended by the American Academy of Pediatrics.
- Maternal Health Screenings: Implement mental health screenings for new mothers as part of their baby’s 4-week, 8-week, 6-month, and 18-month check-ups and require insurance (private and Medicaid) to cover the service.

Invest in complete, equitable data systems

- Improved Data: Invest in state systems to provide easier, streamlined access to services that Michiganders need and to which they are entitled and to increase the capacity to collect and publish data that is disaggregated by race, ethnicity and income to evaluate, understand and improve outcomes for kids and families.

Compassion Cures

Building HOPE by Overcoming Stigma with Substance Use Disorder

Join us on March 3rd
from 11 am - 1:30 pm
MCC Beatrice E. Doser Building, Sidney MI
Light lunch will be provided

Our Goal is to Facilitate a community conversation around:

- **The importance of overcoming stigma**
- **The prevalence of fentanyl**
- **The value of Narcan**
- **How we can as community members encourage access to acceptance and resources for those suffering from mental health issues and substance use disorder**



We will view "Compassion Cures," a 40-minute documentary focusing on the stigma surrounding Substance Use Disorder, why it contributes to the increase in those struggling to seek help or overdose, and what we can do as a community to treat Substance Use Disorder as a disease without judgment and with compassion.

**Registration Closes
February 24th:**



tinyurl.com/compassioncures

Brought to you by:



Montcalm Prevention
COLLABORATIVE

CONCEPT PAPER

Normalizing Naloxone (Narcan) in Montcalm County, MI

Introduction:

Over 700,000 people died in the United States (US) from drug overdoses between 1999 and 2017, with opioids being involved in 70% of drug overdose deaths in 2018 (Wilson et al., 2020). Recent provisional data from the Centers for Disease Control and Prevention (CDC), 2019 show that there were an estimated 100,306 reported overdoses during the 12-month period ending in April 2021 (Ahmad et al., 2021). As the opioid overdose mortality crisis continues, innovative means of getting Narcan into households need to be developed. From January 1, 2021 – November 1, 2021, Montcalm County saw Narcan (a medication that rapidly reverses an opioid overdose) issued by emergency services personnel at a rate of 70 per every 100,000 people. This number is one-third less than Michigan's state average for issuing Narcan, yet Montcalm County experienced 1.7 times more suspected fatal drug overdoses than the state average. "We're having more people dying than average and less Narcan given than average." Mid-Michigan District Health Department Medical Director Dr. Jennifer Morse summarized. (Waldron, 2021).

Purpose:

This program will be designed to normalize the possession of Narcan Kits by distributing to at-risk residents who reside in Montcalm County via a First Aid Kit. By distributing Narcan as part of a "grouping of first aid products" the hope is to change mindsets, from Narcan being a symbol that connects an individual to drug-use, to Narcan being part of a Prevention Toolkit that increases: the commitment of group safety; the well-being of those "who still suffer;" and, the ability to save someone who has an adverse reaction to a prescribed opioid.

Project description:

Prevention Staff will order first aid kits and place Narcan within the kit, along with other prevention items such as Poison Control Magnets, Montcalm Care Network Literature, 9-8-8 Info Cards, etc. This project will help to de-stigmatize the receipt/possession of Narcan, by presenting it as a first aid measure, not a stand-alone item that could easily be stigmatized.

Pre-packed first aid kits will be distributed at local events such as Food Commodity Distributions, Local Food Pantries, Parent Events, Commission on Aging Events, Community Health Fairs, Montcalm Prevention Collaborative Events, School Open Houses, Faith-Based Events and Youth Leadership Events.

Budget:

\$9,000 maximum - 500 pre-packed first aid kits.

Kits ordered by the 100; up to 500 total. MPC Board Approval will be sought before each order.

Potential partners:

Montcalm Care Network – 500 Narcan Kits

Mid-Michigan District Health Department – Additional Items for Kits

State Opioid Response Grant w/approval from Montcalm Prevention Collaborative – Funding

Contact information:

John Kroneck, MA, LPC, CPC
Health Promotion Supervisor
SUD Prevention and Recovery Support Services
Mid-Michigan District Health Department
615 N. State St., Suite 2, Stanton MI 48888
JKroneck@mmdhd.org
Cell: 616-302-6009

Sources:

Ahmad, F. B., Rossen. L. M., & Sutton. P. (2021). Provisional drug overdose death counts. *National Center for Health Statistics, Center for Disease Control and Prevention*. Accessed on December 12, 2022: <https://www.cdc.gov/nchs/nvss/vsrr/drug-overdose-data.htm>.

Centers for Disease Control and Prevention (CDC) (2019). *2019 Annual Surveillance Report of Drug-Related Risks and Outcomes — United States Surveillance Special Report*. In *Centers for Disease Control and Prevention, U.S. Department of Health and Human Services* Published November 1, 2019.

Waldron, E. (2021). Local Board of Health approved syringe service program for Montcalm County to combat HIV outbreak. *Daily News* accessed on December 22, 2022: <https://www.thedailynews.cc/articles/board-of-health-oks-syringe-service-program-for-montcalm-county-to-combat-hiv-outbreak/>.

Wilson, N., Kariisa, M., Seth, P., Smith IV, H., & Davis, N. L. (2020). Drug and opioid-involved overdose deaths — United States, 2017–2018. *Morbidity and Mortality Weekly Report*, 69(11), 290–297. <https://doi.org/10.15585/mmwr.mm6911a4>.

--caj 1/5/2023